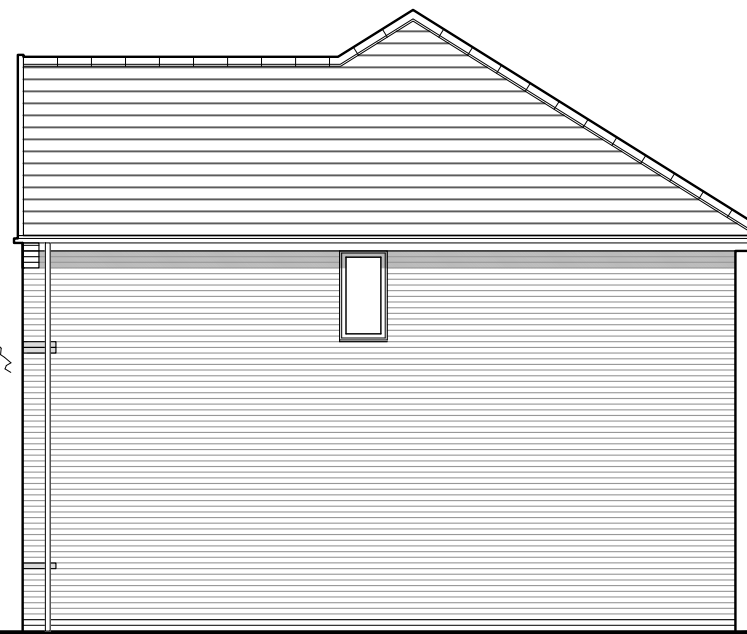


Scale 1:100
Issue 4.1



FRONT ELEVATION



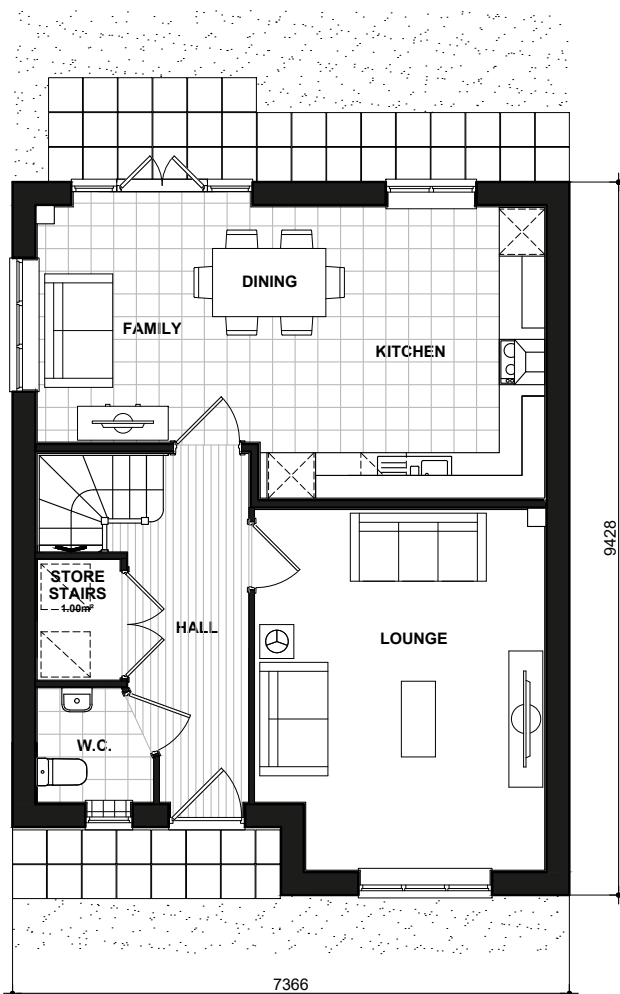
SIDE ELEVATION



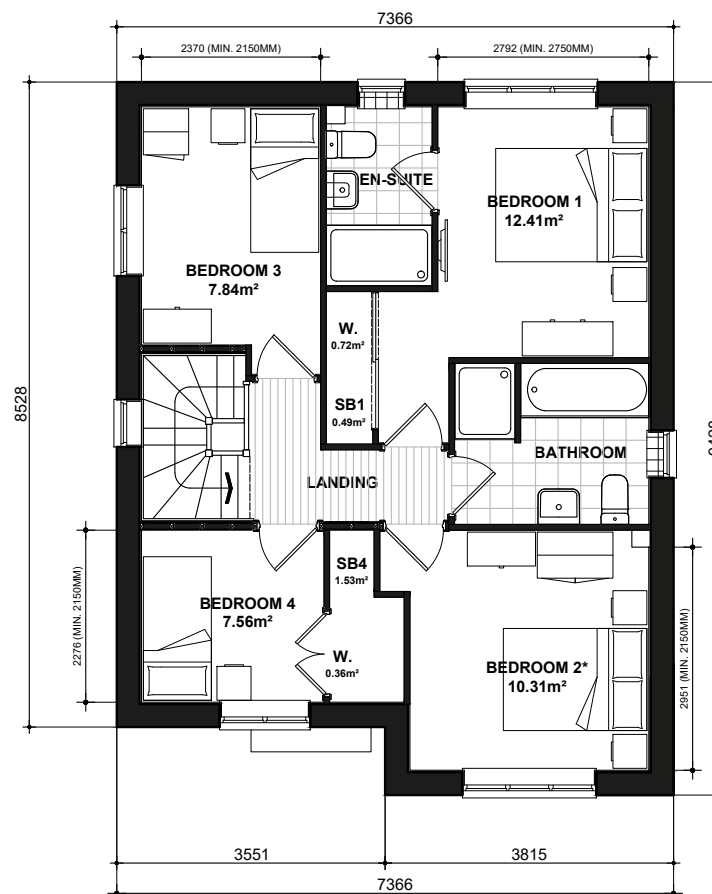
REAR ELEVATION



SIDE ELEVATION



GROUND FLOOR PLAN



FIRST FLOOR PLAN

* Denotes floor areas shown to comply with National Described Space Standards (see schedule). Room layout shown as furnished and does not demonstrate compliance.

National Space Standards		
4B5P	Actual Area	NSS Requirement
Ground Floor Plan	55.70m ²	
First Floor Plan	55.70m ²	
Total floor area m ²	111.39m ²	97.00m ²
Total floor area ft ²	1199ft ²	1044ft ²
Bedroom 1	12.41m ²	11.5m ²
Bedroom 2	10.31m ²	7.5m ²
Bedroom 3	7.84m ²	7.5m ²
Bedroom 4	7.56m ²	7.5m ²
Store Bedroom 1	0.49m ²	
Store Stairs	1.00m ²	
Store Bedroom 4	1.53m ²	
Built in store total	3.02m²	3.0m²

Haddon
BRICK
NSS.QA400.PL-01

DATE: MAR 2021 REV:
SCALE: 1:100 @ A3

DRAWN: JG 112.94m²
CHECKED: GPM 1216ft²

BLOOR HOMES